

## Product Range Data Sheet

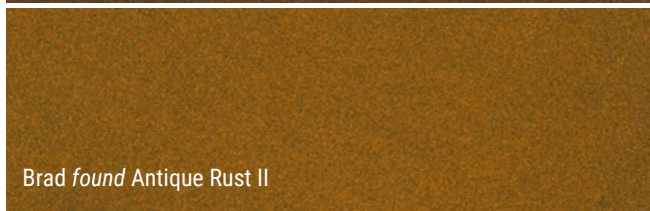
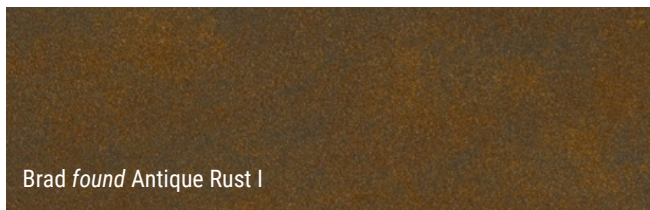
### Description

The Oxide Range of three Rust - effect finishes is a multi-stage fusion process designed to capture rust and oxidized steel effects.

Oxide Fusion provides a superior aesthetic rust with outstanding properties which will protect the substrate and retain a decorative, durable and corrosion free finish.

Applied in our controlled factory environment and suitable for steel, stainless steel, aluminium, extrusions and castings for exterior and interior use with high demands to appearance.

Excellent for architectural applications and ideally suited to public spaces and high-traffic areas due to its superior resistance to wear and tear, and with no danger of dirtying or damaging clothing or property.



### Suitable for Architectural Metalwork

- Aluminium
- Mild Steel
- Stainless Steel
- Cast Metals
- Zinc based substrates
- Qualizinc

### Properties & Finish Characteristics

- Totally inert. No rusting or bleed issues
- Zero risk of staining clothing or paving areas
- No damage, weakening or physical corrosion to the substrate
- Chemically stable
- Instant sealed rust finish. No time lost waiting for oxidation
- Instant historical value
- External/Internal
- 25 Year anti-corrosion

### Durability & Weather Resistance Performance

- Resistance to Humidity through Condensation (Water Atmospheres) - ISO6270-2
- Weather Resistance: 1000 hours Resistance to Acetic Acid Salt Spray - ISO9227
- Natural weathering in Florida Climate for 3 years- ISO 2810
- UV Stability in Florida Climate for 5 years - AAMA 2604
- Colour Fastness: Resistance to acid rain - ISO 22479
- Gloss Stability: 90% gloss retention after 1000 hours accelerated weathering - ISO16474-2

### Fire Rating



- Tested to A2-s1, d0 on Mild Steel, Stainless Steel and Aluminium
- Where A2-s1, d0 is required please contact Bradleys for fire rated specification

### Repair & Maintenance

- Expected Design Life of 60 years
- Simple and easy to clean with pH neutral water and soft cloth or sponge
- Site repair systems available

### Advantages

- No weight issues
- No waiting for oxidation
- No sealing coat required
- No bleed or run-off onto stonework
- Ease of installation

### Environmental

- Embodied carbon: A1-A3 (production stage) 3.70 kg CO<sub>2</sub> eq/kg
- Recyclability: Can be removed for the base material to be recycled or re-used