

IMPERIAL WAR MUSEUM

LONDON SE1

FEATURE STAIRCASE, ENTRANCE STAIRCASE AND FAÇADE PANELS

The Challenge

The Imperial War Museum (IWM) underwent a £40 million refurbishment in 2014, the centenary of the outbreak of the First World War. The transformative yet sympathetic design was by leading architects Foster and Partners.

We were briefed to provide metal finishing services for the museum's main cantilever staircase (rising from the spectacular new atrium), as well as the entrance staircase and a number of façade panels.

The main staircase is made of steel and the challenge was to deliver a distinctive finish, inspired by the look and feel of an early 20th century battleship. Because of extensive public use, the metal coating had to be not only aesthetically effective and of guaranteed quality, but also extremely durable and maintenance free. With some of the staircase sections weighing up to four tonnes, the utmost care and precision was needed.

To allow for on-site welding, we had to build into the project plan the feasibility of on-site touch-up following installation.



Our Solution

We worked closely with IWM and Foster and Partners, consulting and providing an extensive range of samples for consideration. The ultimate solution was a unique finish, comprising pure zinc, aged using the MET451 Metallique Age system. This gives a classic look and feel that complements the museum's iconic exhibits and displays charting the history of warfare.

We used precision masking to allow for welding to be done on site. We then had to find a way to re-create the finish accurately and seamlessly once the staircase sections were installed and welded. This involved hiring a specialist machine from the USA.

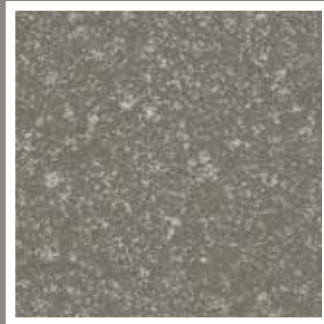
To support the world-renowned collection of artefacts, and also provide beauty and sustainability, we used carefully selected colours and materials on the architectural metalwork around the museum.

The museum is one of London's top visitor attractions. It was vital that we delivered our contribution to the refurbishment project on time to enable reopening on schedule.



PROJECT DATA

Location	Lambeth Road, London SE1
Sector	Exhibition & Commercial
Completion	2014
Items Coated	Entrance staircase, façade plates, columns & posts, main atrium staircase
Systems	Metalage, Powder Coat & Wet Spray
Durability	Internal
Finish	Dark Charcoal Metallic & MTL451 Zinc Age - Imperial



MTL451 Zinc Age - Imperial



Dark Charcoal Metallic

